

This functionality is primarily used by health policy researchers and the media as an easy way to obtain a large set of data. The data in the two tables comes from the data that is displayed in the Nursing Home Compare Tool.

For information about nursing homes in a particular geographical area, you should use the Nursing Home Compare tool instead of downloading the data.

Data Refreshes: Generally, the downloadable databases are refreshed within 24 hours after the data are refreshed on medicare.gov. The date “Modified” in the zipped file indicates the date of the last refresh of the downloadable database.

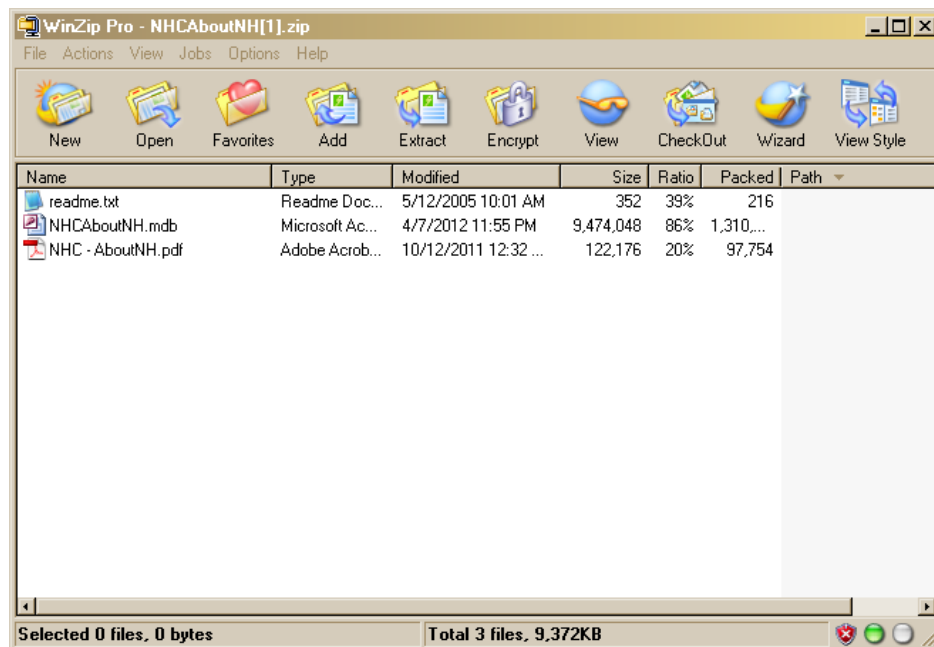
- You can tell when the Nursing Home Compare data has been updated by looking in the bottom left corner of the [Home Page](#).
- The date “Modified” in the zipped file only indicates the date the data was last manipulated, not the date it was posted to the site.

You can also find Nursing Home Compare data on data.medicare.gov. This website allows you to view the data files embedded on a webpage without downloading them. The data on data.medicare.gov can usually be viewed the same day it has been updated on Nursing Home Compare. Use data.medicare.gov to customize views and filter the Nursing Home Compare data.

Note: Beginning in July 2013, the platform for the Nursing Home Compare data sets will be data.medicare.gov. The downloadable databases will not be available after that time.

[View more information on Downloadable Databases](#)

[Learn more about Nursing Home Compare data.](#)



Changes to the Downloadable Database

In October 2006, March 2007, April 2008, and December 2008, the downloadable database files were modified. Please read the .pdf files that accompany each of the five parts to learn what was modified before using the files.

Demographic Data

The information on the nursing homes' demographics are prepared by each nursing home at the beginning of the regular State inspection. This information is reported by the nursing homes themselves. It is reviewed by nursing home inspectors, but not formally audited to ensure data accuracy.

Quality Measure Data Collection Period

The collection period for the quality measures long-stay resident measures is three months. The collection period for the short-stay resident measures is six months. The collection period for the influenza vaccination measure is for the annual “flu season”, October – March. The collection period for the pneumococcal vaccination measure is for six months with a six-month delay.

Currently, the Nursing Home Compare quality measures are refreshed in the first month of each quarter. Quality Measure Data Collection Dates are located on the table at the end of this document.

The Nursing Home Compare database is divided into five (5) parts to ease the downloading process. To view the entire database, all five (5) parts must be downloaded. The five (5) parts are as follows:

1. About the Nursing Home
2. About the Nursing Home Residents
3. About the Nursing Home Inspection Results
4. About the Nursing Home Staff
5. About the Nursing Home Ratings

This document describes only the **About the Nursing Home** part.

In the About the Nursing Home section of the database, two tables are used.

dbo_vwNHC_GEOGRPHY

1 StateCode
2 StateName
3 County_name
4 County_code
5 ZIP_code

dbo_vwNHC_NH

1 ProvNum
2 NursingHomeName
3 Street
4 City
5 State
6 ZIPCode
7 PhoneNumber
8 HealthSurveyDate (ADD Oct 2006)
9 FireSurveyDate (ADD Oct 2006)
10 CertifiedNumberOfBeds
11 TotalNumberOfResidents
12 PercOfOccupiedBeds
13 SprinklerStatus (ADD Oct 2006)
14 CategoryDescription
15 TypeOfOwnership
16 LocatedWithinAHospital
17 MultiNursingHomeOwnership
18 ResidentAndFamilyCouncils
19 CCRC (ADD March 2007)
20 OISSurvey (ADD Oct 2006)
21 SFF (ADD April 2008)

Table **dbo_vwNHC_GEOGRPHY**, contains five (5) fields. This table provides the geographical data that is used by the Nursing Home Compare tool for geography searches.

1. StateCode: char(2)

Lists the alphabetic postal code used to identify each individual state. All fifty (50) states are listed, as well as:

- DC for Washington D.C.
- GU for Guam
- PR for Puerto Rico
- VI for Virgin Islands

2. StateName: varchar(40)

Lists the name used to identify individual sections of each state. All fifty (50) states are listed, as well as Washington D.C., Guam, Puerto Rico and the Virgin Islands.

3. County_name: varchar(25)

Lists county names within each state.

4. County_code: interger

Lists the four (4) or five (5) digit numeric code for each individual county. There is one county code per county.

5. ZIP_code: char(5)

Lists the five (5) digit postal code used to identify each individual section of a county.

=====

Table **dbo_vwNHC_NH** contains twenty-one (21) fields. It provides general nursing home information in response to a Nursing Home Compare search.

1. ProvNum: varchar(50)

Lists the nursing homes by their provider identification number.

2. NursingHomeName: varchar(80)

Lists the name of the nursing home.

3. Street: varchar(60)

Lists the street address of the nursing home.

4. City: varchar(30)

Lists the city in which the nursing home is located.

5. State: varchar(2)

Lists the 2 letter State code where the nursing home is located.

6. ZIP Code: char(5)

Lists the 5-digit numeric ZIP code of the nursing home.

7. PhoneNumber: char(10)

Lists the 10-digit numeric telephone number, including area code.

8. Health Survey Date: char(10)

Lists the most recent date of nursing home's health inspection.

9. Fire Survey Date: char(10)

Lists the most recent date of nursing home's fire safety inspection.

10. Certified Number Of Beds: int

Lists the total number of certified beds in the nursing home.

11. Total Number Of Residents: int

Lists the total number of residents in the nursing home.

12. Perc Of Occupied Beds: varchar(4)

Lists the percentage of certified beds that are occupied in the nursing home.

13. Sprinkler Status: Varchar(75)

Lists the status of the sprinkler system installed in the nursing home. The choices are:

- fully sprinklered
- partially sprinklered
- not sprinklered
- missing/no data

14. Category Description: char(50)

Lists whether the nursing home participates in Medicare, Medicaid or both.

15. Type Of Ownership: varchar(50)

Lists the type of ownership the nursing home falls under. The choices are:

- For profit – Corporation
- For profit – Individual

- For profit – Partnership
- Government – City
- Government – City/County
- Government – County
- Government – Federal
- Government – Hospital District
- Government – State
- Non profit – Church Related
- Non profit – Corporation
- Non profit – Other

16. Located Within A Hospital: varchar(3)

“Yes” or “No” to specify whether or not the nursing home is located within a hospital.

17. Multi Nursing Home Ownership: varchar(3)

“Yes” or “No” to specify whether or not the owner owns more than one nursing home.

18. Resident And Family Councils: varchar(8)

Lists which councils the nursing home participates in. The choices are:

- Resident
- Family
- Both
- None

19. CCRC indicator varchar(3)

“Yes” or “No” to specify whether or not the nursing home is located within a Continuing Care Retirement Community.

20. QISSurvey: varchar(3) YES/NO

Quality Indicator Survey (QIS) process Indicator - The QIS uses a structured review of the medical records and direct observations of the care of larger samples of residents to derive rates for a comprehensive set of Quality of Care Indicators (QCIIs).

21. SFF: varchar(3) YES/NO

Special Focus Facility - Indicates nursing homes that have a record of persistently poor survey performance, and have been selected for more frequent inspections and monitoring.