

This functionality is primarily used by health policy researchers and the media as an easy way to obtain a large set of data. The data in the one table comes from the data that is displayed in the Nursing Home Compare Tool.

For information about nursing homes in a particular geographical area, you should use the Nursing Home Compare tool instead of downloading the data.

Data Refreshes: Generally, the downloadable databases are refreshed within 24 hours after the data are refreshed on medicare.gov. The date “Modified” in the zipped file indicates the date of the last refresh of the downloadable database.

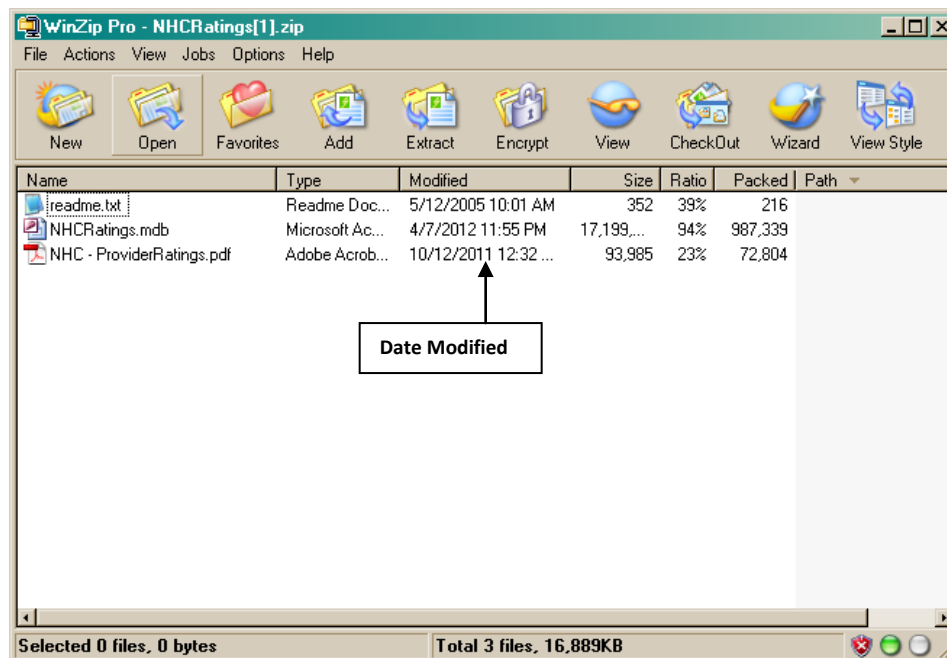
- You can tell when the Nursing Home Compare data has been updated by looking in the bottom left corner of the [Home Page](#).
- The date “Modified” in the zipped file only indicates the date the data was last manipulated, not the date it was posted to the site.

You can also find Nursing Home Compare data on data.medicare.gov. This website allows you to view the data files embedded on a webpage without downloading them. The data on data.medicare.gov can usually be viewed the same day it has been updated on Nursing Home Compare. Use data.medicare.gov to customize views and filter the Nursing Home Compare data.

Note: Beginning in July 2013, the platform for the Nursing Home Compare data sets will be data.medicare.gov. The downloadable databases will not be available after that time..

[View more information on Downloadable Databases](#)

[Learn more about Nursing Home Compare data.](#)



The provider ratings database consists of the domain star ratings for each nursing home.

The Nursing Home Compare database is divided into five (5) parts to ease the downloading process. To view the entire database, all five (5) parts must be downloaded. The five (5) parts are as follows:

1. About the Nursing Home
2. About the Nursing Home Residents
3. About the Nursing Home Inspection Results
4. About the Nursing Home Staff
5. About the Nursing Home Ratings

This document describes only the **About the Nursing Home Ratings** part.

In the **About the Nursing Home Ratings** part of the database, one (1) table is used.

Dbo_vwNHC_PROVIDER_RATINGS

1. ProvNum
2. DomainName
3. DomainStarRating
4. Language

The table **dbo_vwNHC_PROVIDER_RATINGS** contains four (4) fields. This table provides star ratings data for each nursing home at a domain level.

1. ProvNum: varchar(10)

Lists the nursing homes by their provider identification number.

2. DomainName: text(225)

Lits the name used for a particular plan ratings domain.

3. DomainStarRating: text(225)

Lists the performance of a particular ratings domain. The star ratings system is as follows:

- 1 out of 5 stars..... 1 star
- 2 out of 5 stars..... 2 stars
- 3 out of 5 stars..... 3 stars
- 4 out of 5 stars..... 4 stars
- 5 out of 5 stars..... 5 stars
- Not Available

4. Language: varchar (7)

Lists the language for the associated data.